

Community Consultative Committee – August 2025

20 August 2025



WELCOME AND APOLOGIES



Welcome

Apologies

Declaration of interests

Confirmation of previous minutes

AGENDA



- 1. Actions from Previous Meeting**
- 2. Correspondence**
- 3. Operational Update**
- 4. Business Name and Website Update**
- 5. Approvals**
- 6. Business Arising**
- 7. Environmental Incidents / Non-compliances**
- 8. Environmental Performance**
- 9. Community Complaints & Enquiries**

ACTIONS / BUSINESS ARISING FROM PREVIOUS MINUTES



| Action / Business Arising | Action Owner | Update |
|---|--------------|---|
| 2025 VPA Grant Funding Dates | MMH / LM | Applications now open (as of 12 August), close 14 th September 2025. |
| Delta Coal to raise concerns with regard to VPA allocation. | LM | Raised with Central Coast Council and realignment of website page and process underway. |

Correspondence since previous meeting

- 14/5/25 – emails LM/MMH to CCC – link to VPPS BESS
- 15/5/25 – emails MMH/Central Coast Council – 2025 grant funding round
- 21/5/25 – email MMH to CCC – 2025 anticipated grant funding round
- 16/7/25 – emails LM/MMH to CCC – 2025 grant funding dates

COMMUNITY FUNDING PROGRAM



Central
Coast
Council

Chain Valley Colliery Community Funding Program

A joint initiative between Central Coast Council, Delta and the local communities, this funding program is designed to improve community infrastructure and services in Chain Valley Bay, Gwandalan, Mannering Park and Summerland Point.



More information

For more information, please contact our Community Grants team on 4325 8861 or email grants@centralcoast.nsw.gov.au

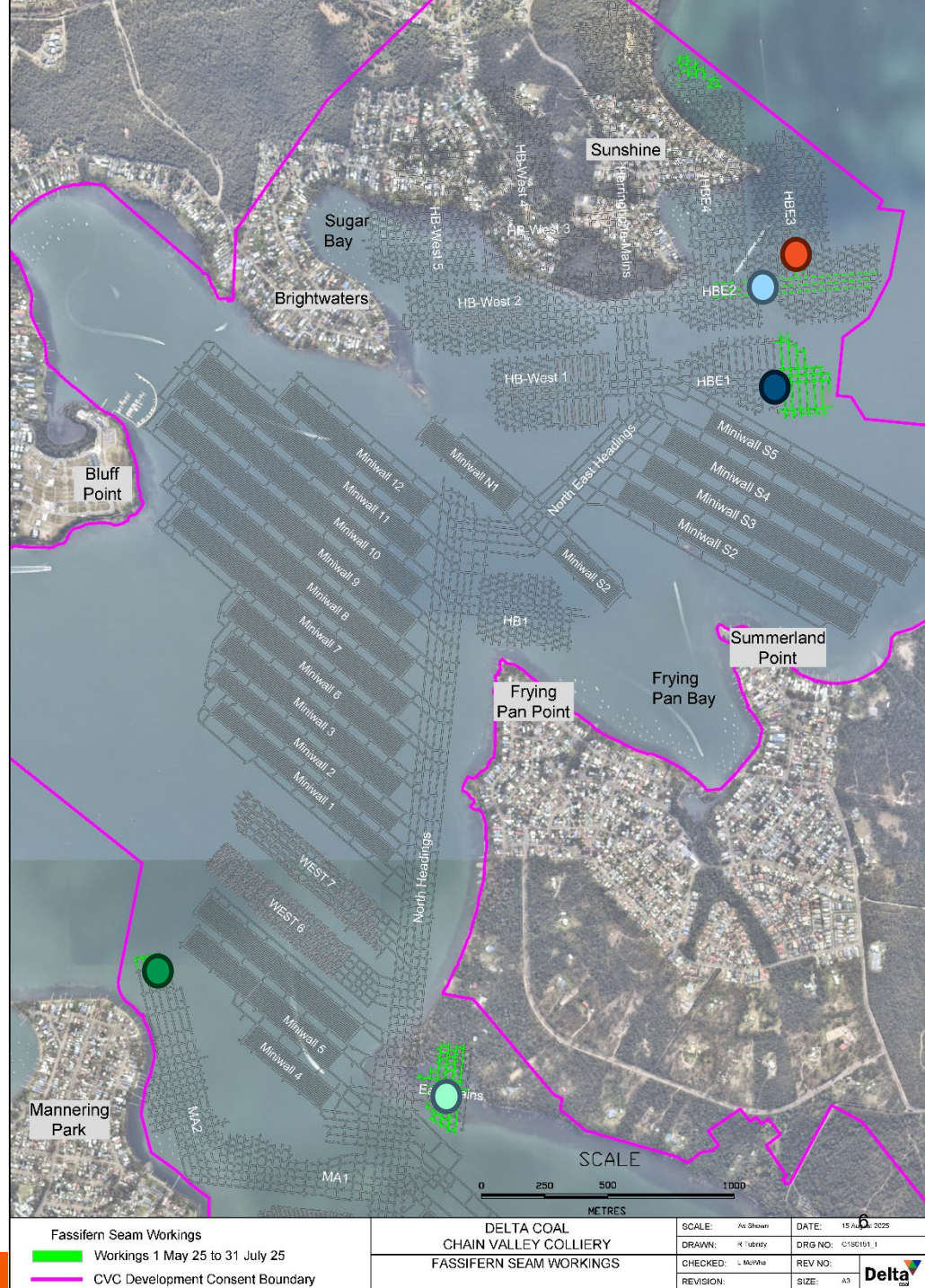
Voluntary Planning Administration:

- Applications open 11 August closing 14 September
- Up to \$30,000 with \$58,000 in total funding available for 2025
- Information sessions were held on:
 - Online session: Thursday 24 July 2025
 - In-person sessions: Wednesday 30 July 2025

OPERATIONAL UPDATE

Production

- Partial secondary extraction in HB-
● E3 panel and HB-E2 panel.
- First workings completed HB-East
1 Panel, secondary extraction to
commence.
- Continuation of workings through
MA2 (heavily faulted area).
- Continued first workings in East
Mains.
- Production 1 May 2025 to 31 July
2025 was 248,800 t ROM Coal.



Current Approvals

Chain Valley Colliery

- EPL 1770: Environmental Protection License - April 2025.
- CVC SSD-5465 (MOD 4): Development Consent – August 2021
- Extraction Plan: MWS5 and NPA (Amendment 2 approved 10 June 2025)

Mannering Colliery

- EPL 191 – Mannering Colliery – April 2025
- Mannering Colliery Project Approval PA 06_0311 (MOD 5) – June 2020

APPROVALS UPDATE



Chain Valley Consent Consolidation

Department assessment report has been completed and is pending Planning Minister sign-off prior to the recommendation being made and referral to the NSW Independent Planning Commission.

Mannering Colliery Project Approval (MP06_0311) Mod 6

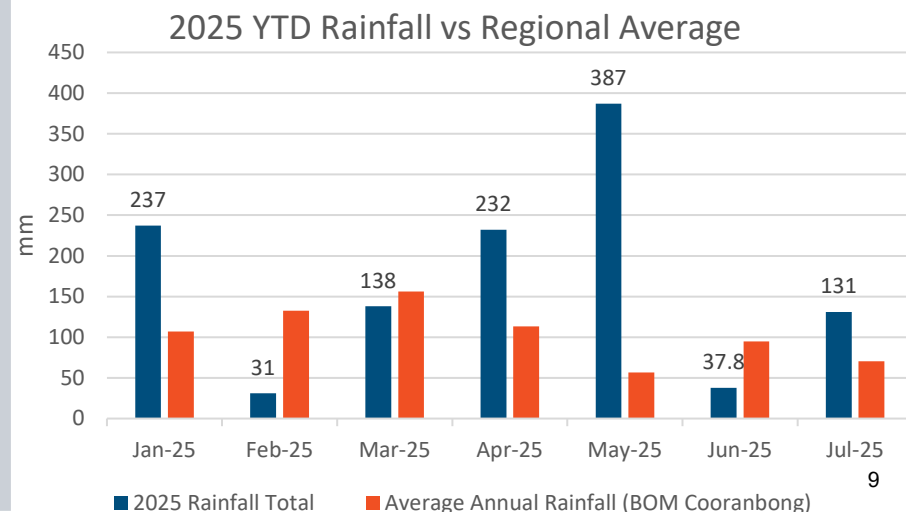
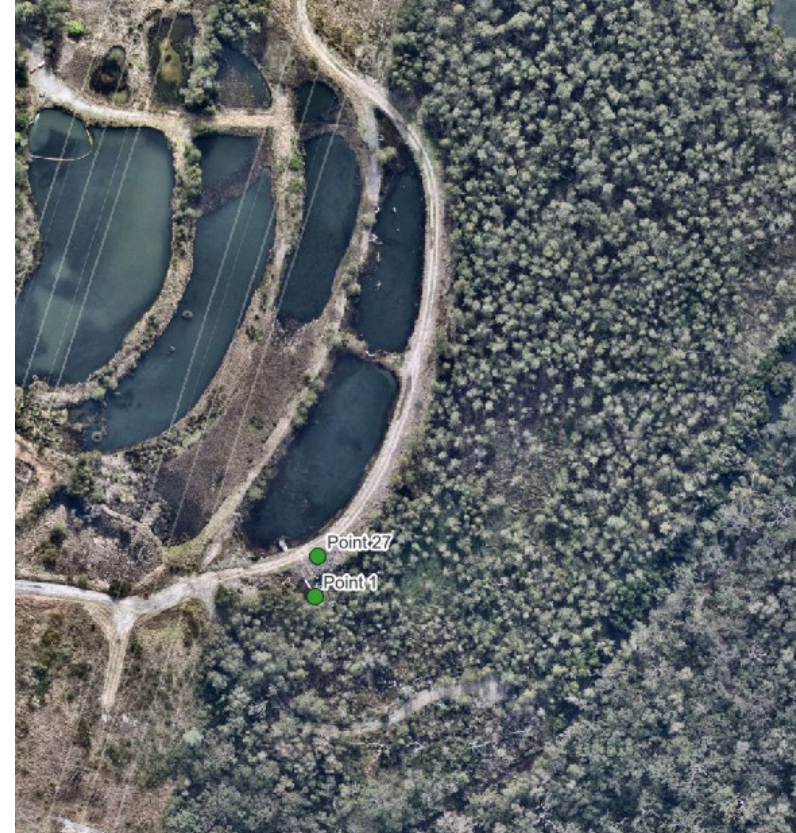
Pending response from Central Coast Council.



Department of Planning, Housing and Infrastructure

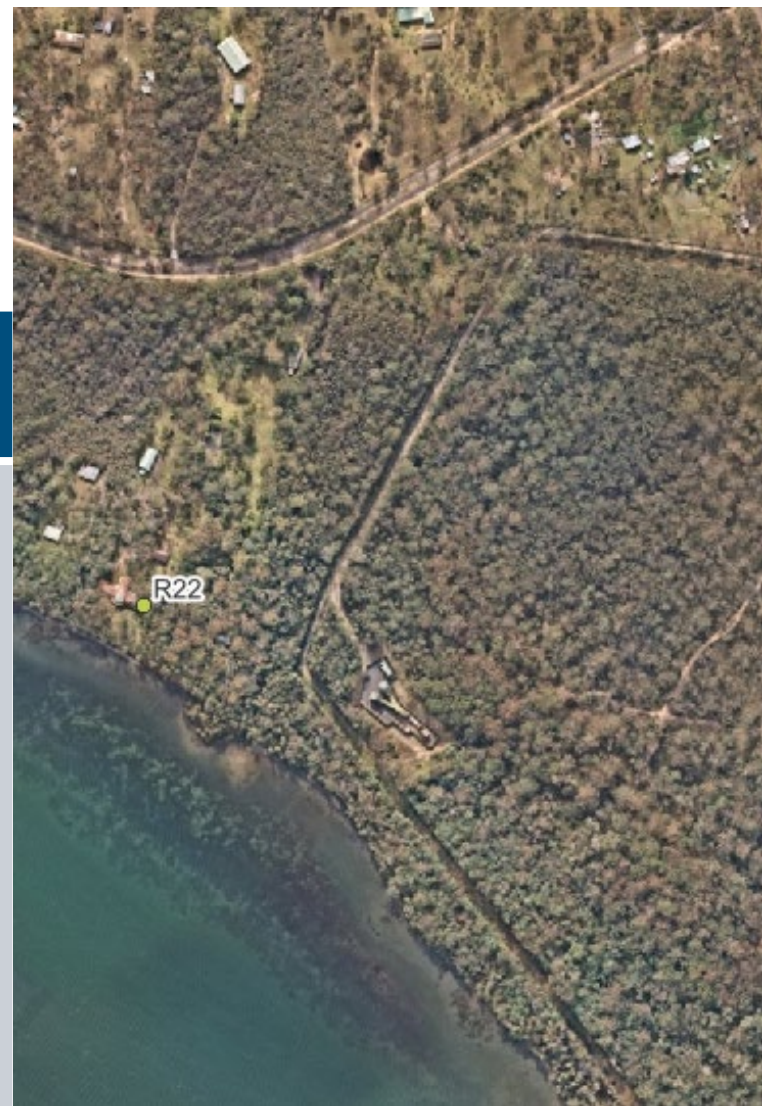
ENVIRONMENTAL INCIDENTS / NON- COMPLIANCES

| Site | Date | Type | Details |
|------|-------------|--------------------------|--|
| CVC | 18 May 2025 | Water Quality Exceedance | <p>Exceedance of TSS limit at EPA Point 27 (spillway) during NSW East Coast severe weather event.</p> <p>Result of 206 mg/L exceeding 50 mg/L limit. NSW EPA provided exemption to license conditions during the severe weather event.</p> |



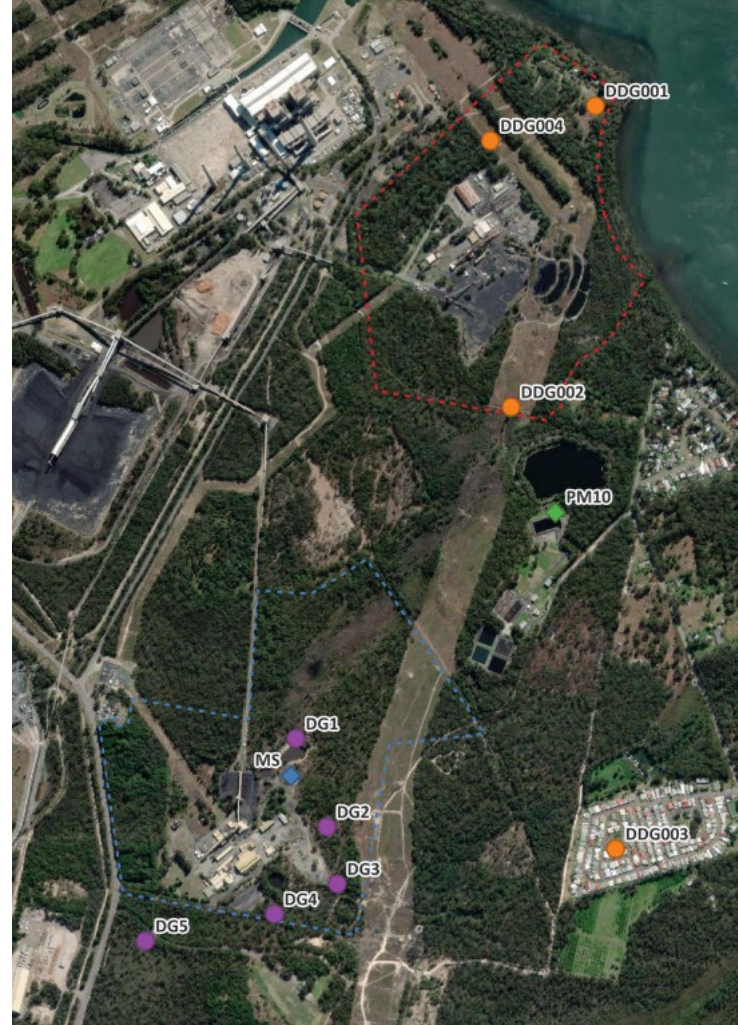
ENVIRONMENTAL INCIDENTS / NON- COMPLIANCES

| Site | Date | Type | Details |
|------|-------------|----------------------------|---|
| CVC | 5 June 2025 | Noise Limit Exceedance R22 | <p>Evening monitoring result of “46-47 dB(A)” at monitoring location R22, potentially exceeding the 46 dB(A) limit. The potential exceedance was reported to the NSW EPA and NSW DPHI. Follow-up monitoring confirmed it was not an ongoing exceedance.</p> <p>Ventilation fan silencer cleaning was undertaken within the following week. Monitoring is being conducted to identify any potential degradation.</p> |



ENVIRONMENTAL INCIDENTS / NON- COMPLIANCES

| Site | Date | Type | Details |
|------|--------------------|----------------------|---|
| MC | 21 May 2025 | Depositional Dust | <p>Exceedance of maximum increase to depositional dust levels in a month period at DG1 and DG4 at Mannering Colliery.</p> <p>Deemed to be unrelated to mine operations.</p> |
| CVC | 22 July 2025 | Depositional Dust | <p>Exceedance of maximum increase to depositional dust levels in a month period at DDG002 at Chain Valley Colliery.</p> <p>Deemed to be unrelated to mine operations.</p> |



DDG002 – July 2025

ENVIRONMENTAL PERFORMANCE

LDP27 (spillway discharges)

5 May – 26 kL

6 May – 259 kL

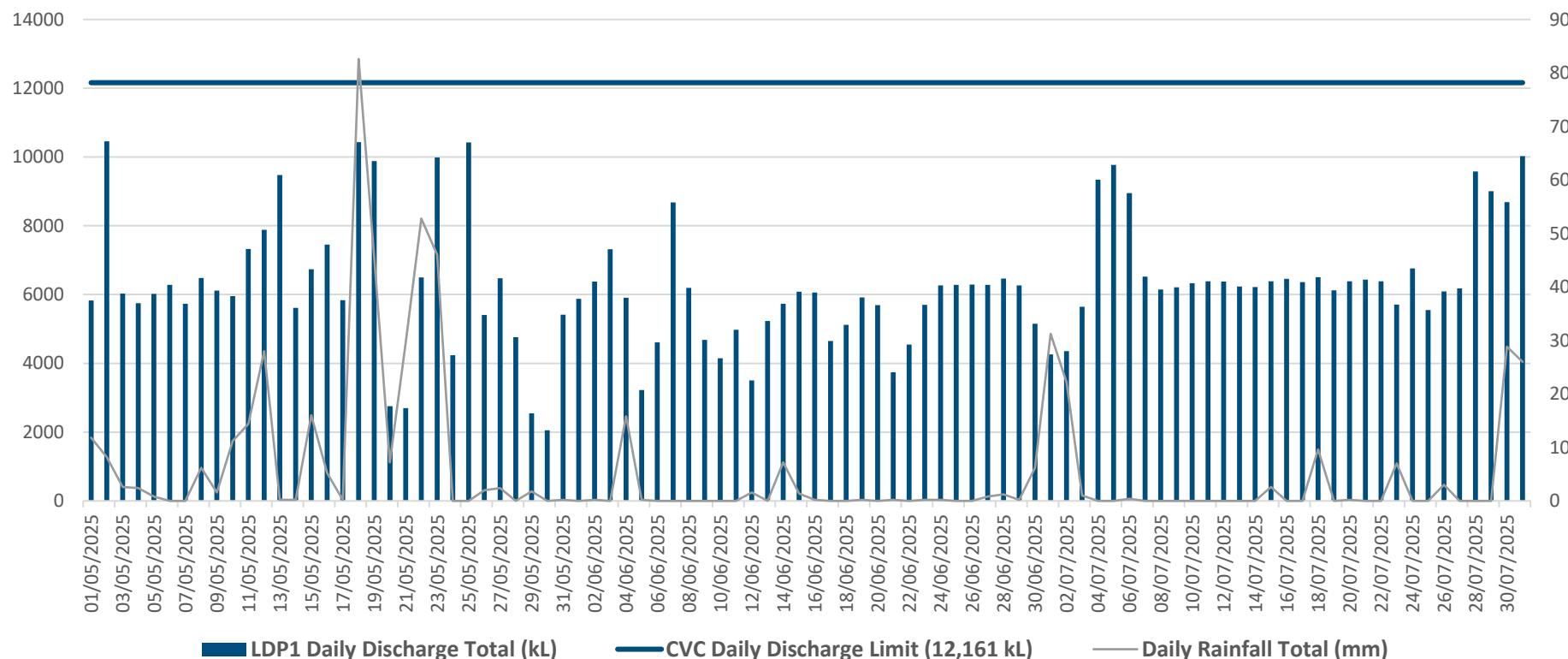
18 May – 758 kL

23 May – 148 kL



CVC Surface Water Daily Discharge and Rainfall Volumes

CVC Point 1 Discharge – 1 May to 31 July 2025



ENVIRONMENTAL PERFORMANCE

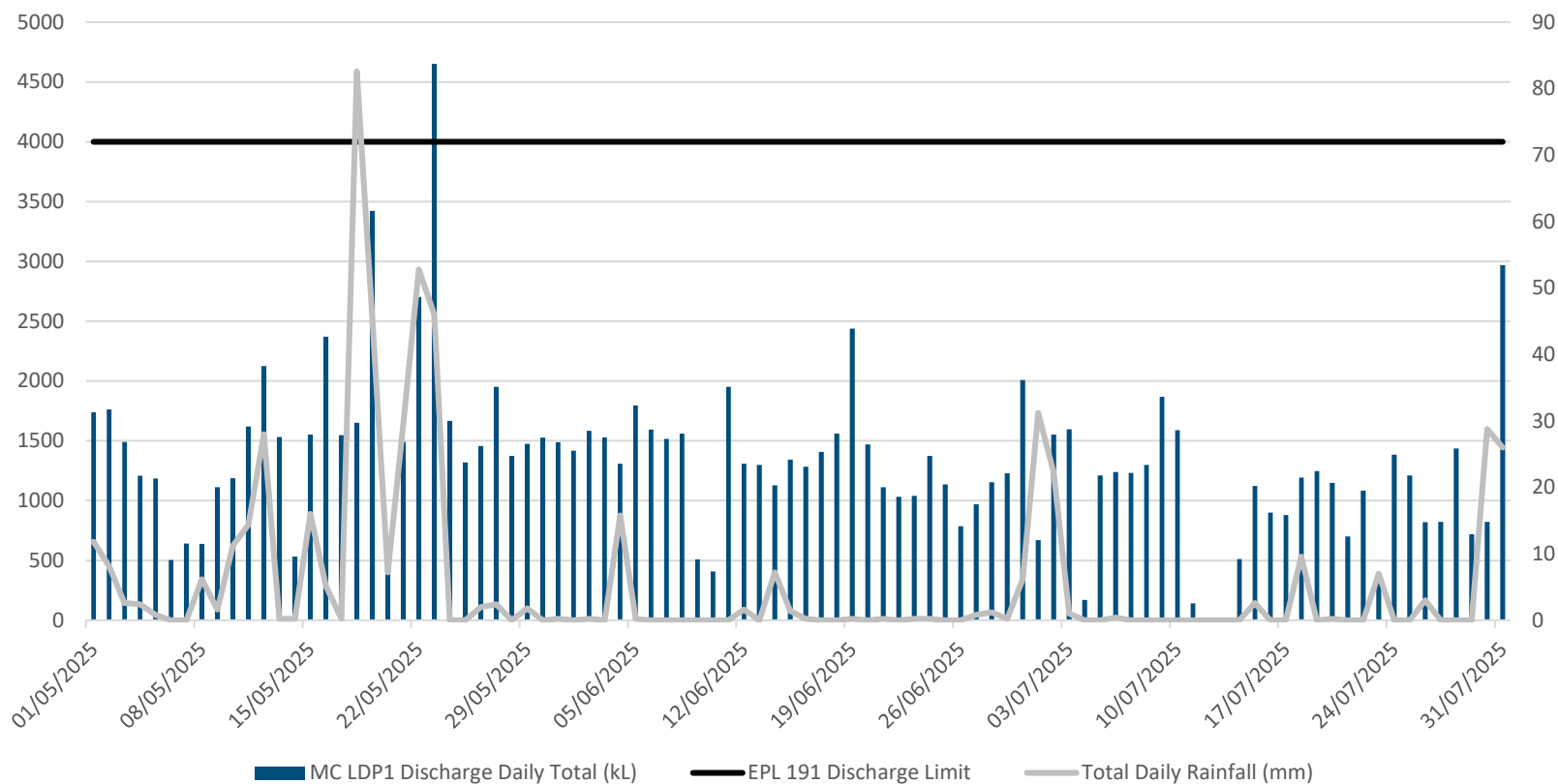


CVC Surface Routine Water Quality Monitoring (LDP1 Monthly)

| LDP1 | Limits | May - 2025 | Jun - 2025 | Jul - 2025 |
|----------------------------------|---------|------------|------------|------------|
| pH (pH Units) | 6.5-8.5 | 7.65 | 7.72 | 7.72 |
| Total Suspended Solids (mg/L) | 50 | <5 | <5 | <5 |
| Oil and Grease (mg/L) | 10 | <5 | <5 | <5 |

MC Surface Water Daily Discharge Volume and Rainfall Volumes

MC LDP1 - Surface Water Daily Discharge
1 May - 31 July 2025



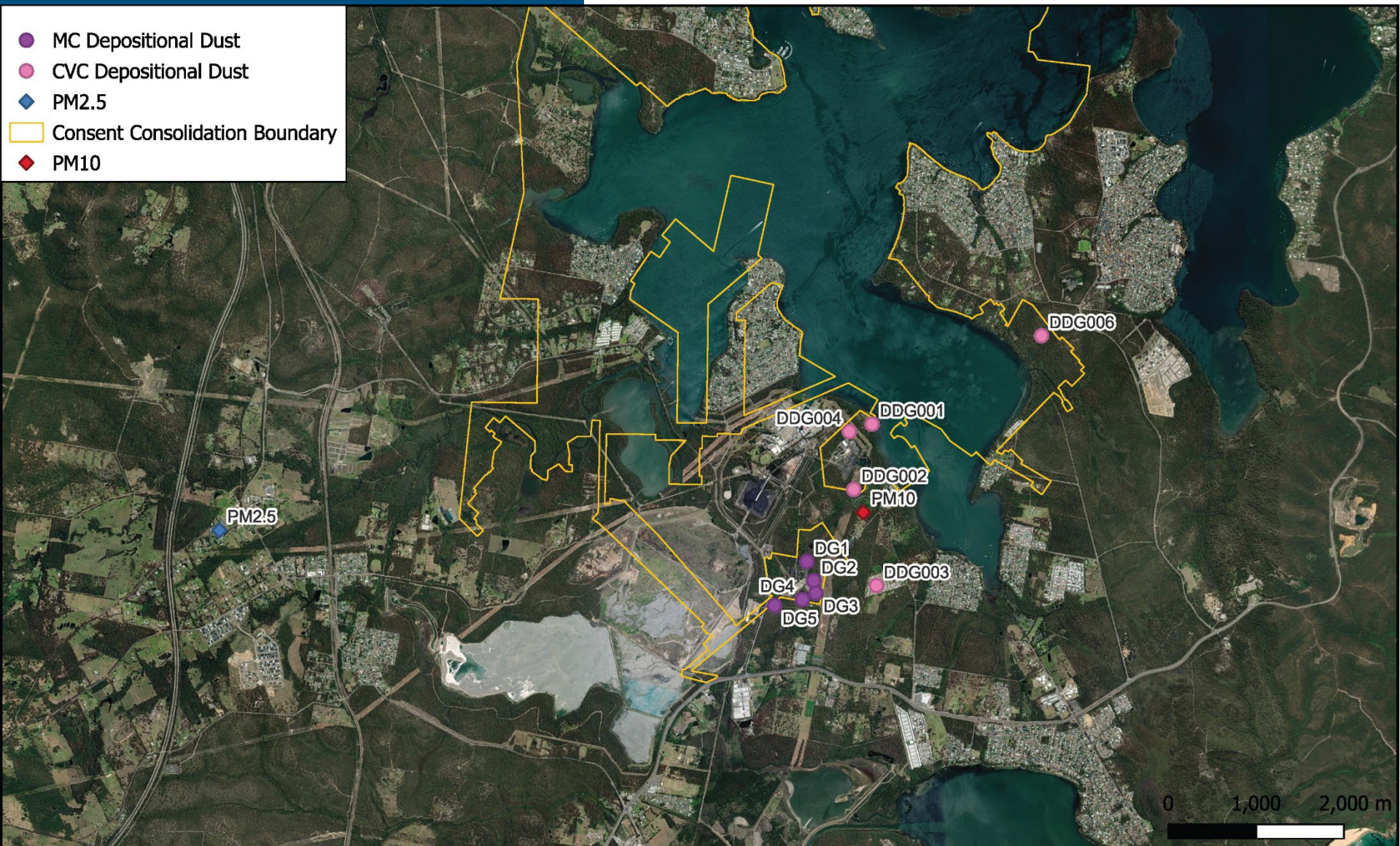
ENVIRONMENTAL PERFORMANCE





MC Surface Water Quality Monitoring

| LDP1 | Limits | May - 2025 | Jun - 2025 | Jul - 2025 |
|----------------------|---------|------------|------------|------------|
| Oil & Grease mg/L | 10 | <5 | <5 | <5 |
| TSS mg/L | 50 | 7.8 | 13.1 | 6.6 |
| pH | 6.5-8.5 | 7.7 | 7.8 | 7.7 |

- MC Depositional Dust
- CVC Depositional Dust
- PM2.5
- Consent Consolidation Boundary
- PM10



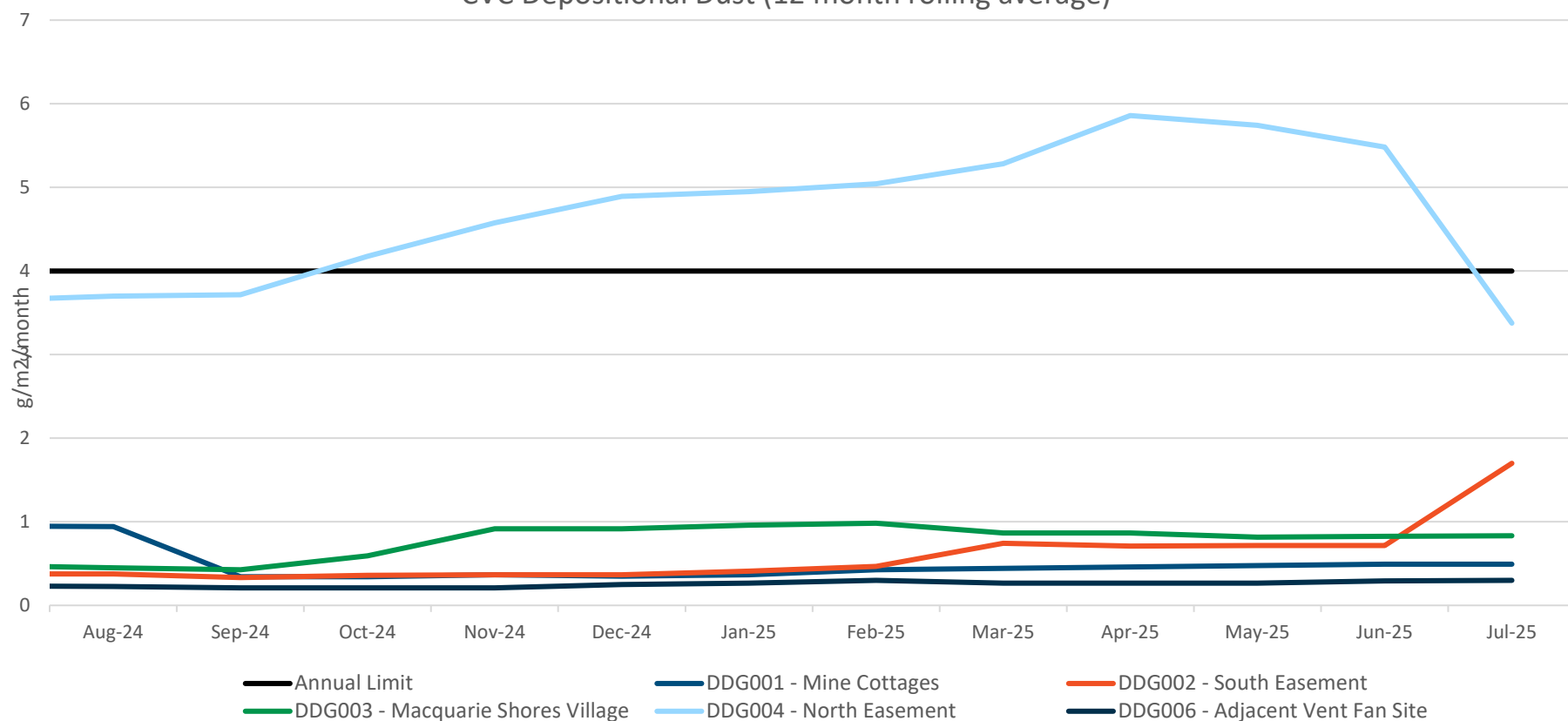
| | | | | |
|---|----------------------------------|--|------------------|-----------------|
|   | Delta Coal Mannering Colliery | | Date:12 Nov 2024 | Scale: As shown |
| | Air Quality Monitoring Locations | | Drawn: LM | DRG NO: N/A |
| | | | Checked: - | REV NO: 0 |
| | | | Signed: - | Size: A3 |

ENVIRONMENTAL PERFORMANCE



CVC Depositional Dust Monitoring

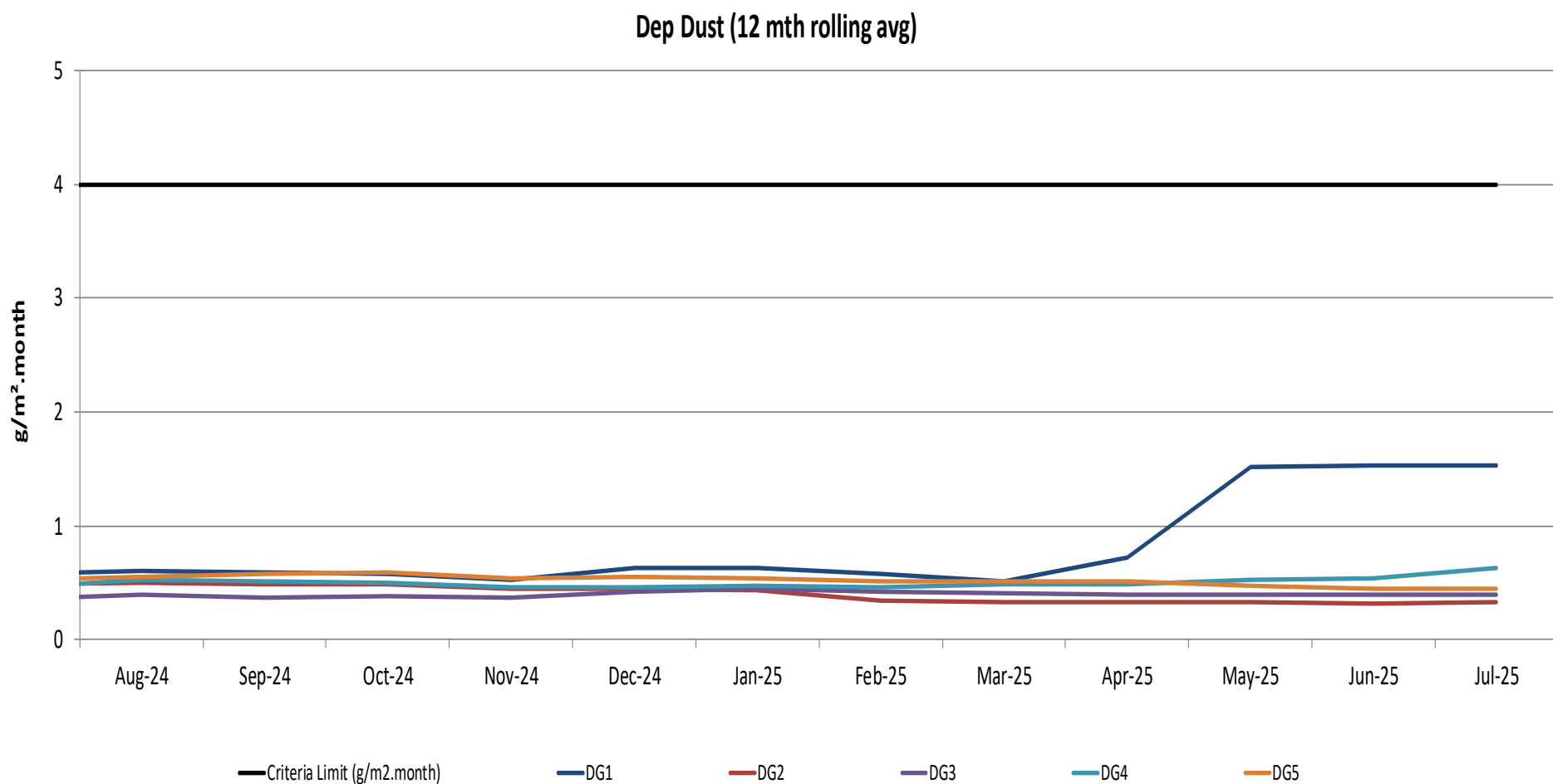
CVC Depositional Dust (12 month rolling average)



ENVIRONMENTAL PERFORMANCE



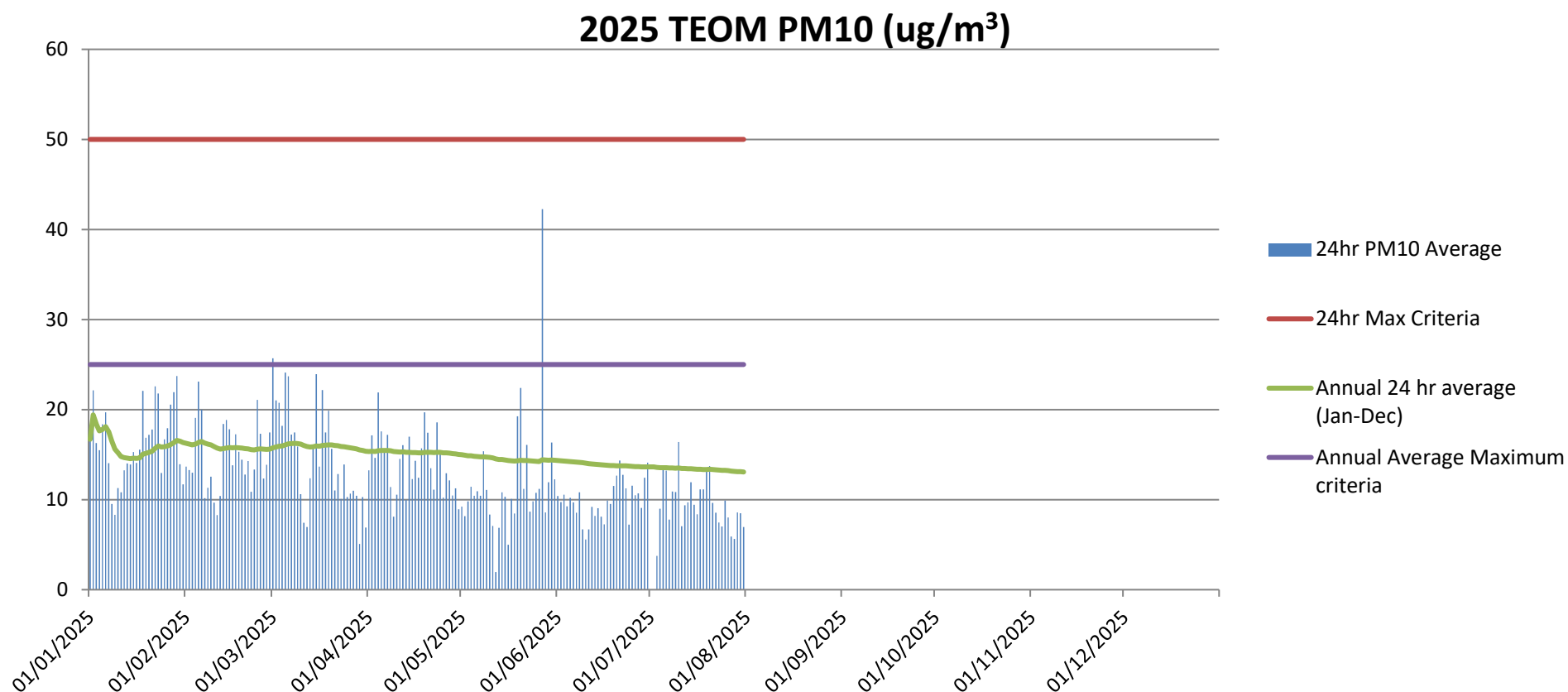
MC Depositional Dust Monitoring



ENVIRONMENTAL PERFORMANCE



PM₁₀ Monitoring

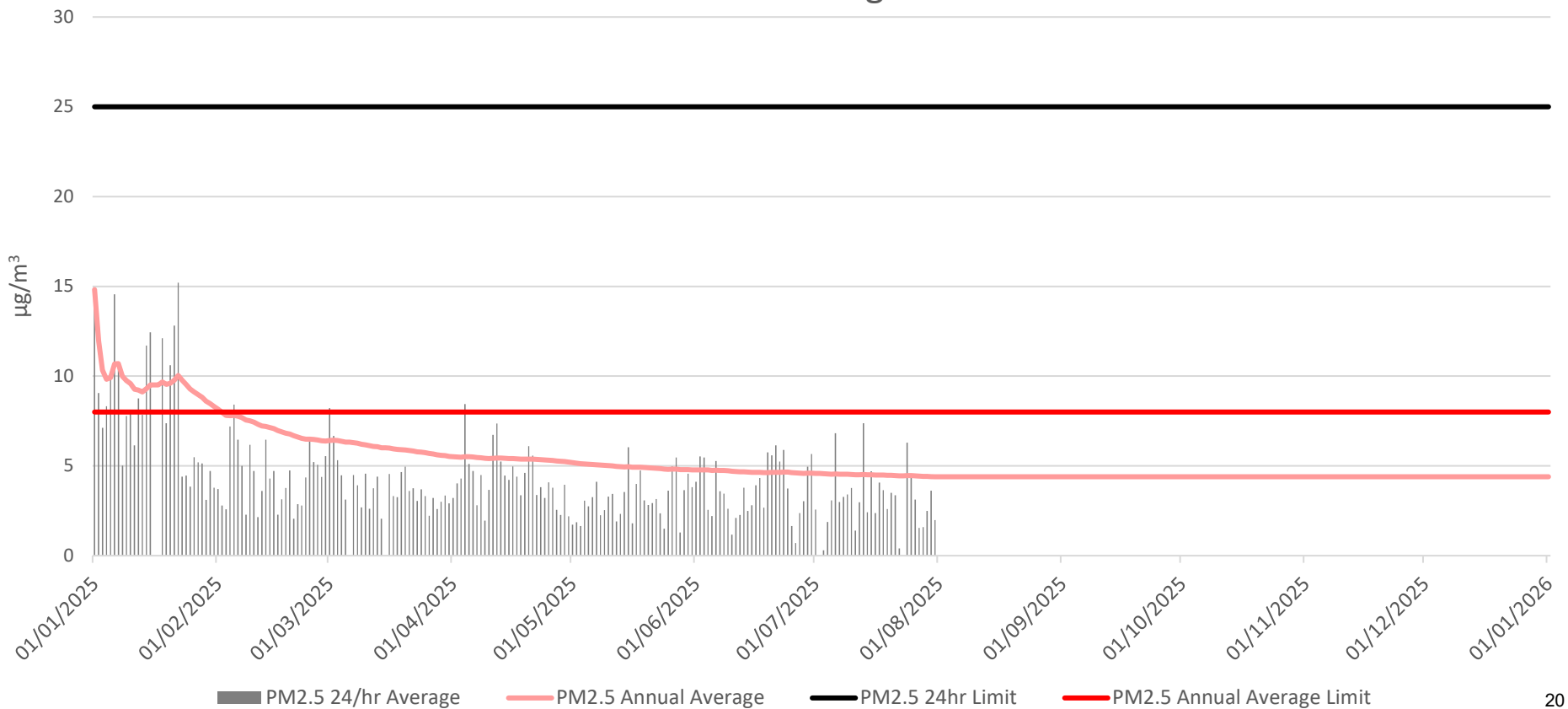


ENVIRONMENTAL PERFORMANCE



PM_{2.5} Monitoring

PM_{2.5} Monitoring - 2025

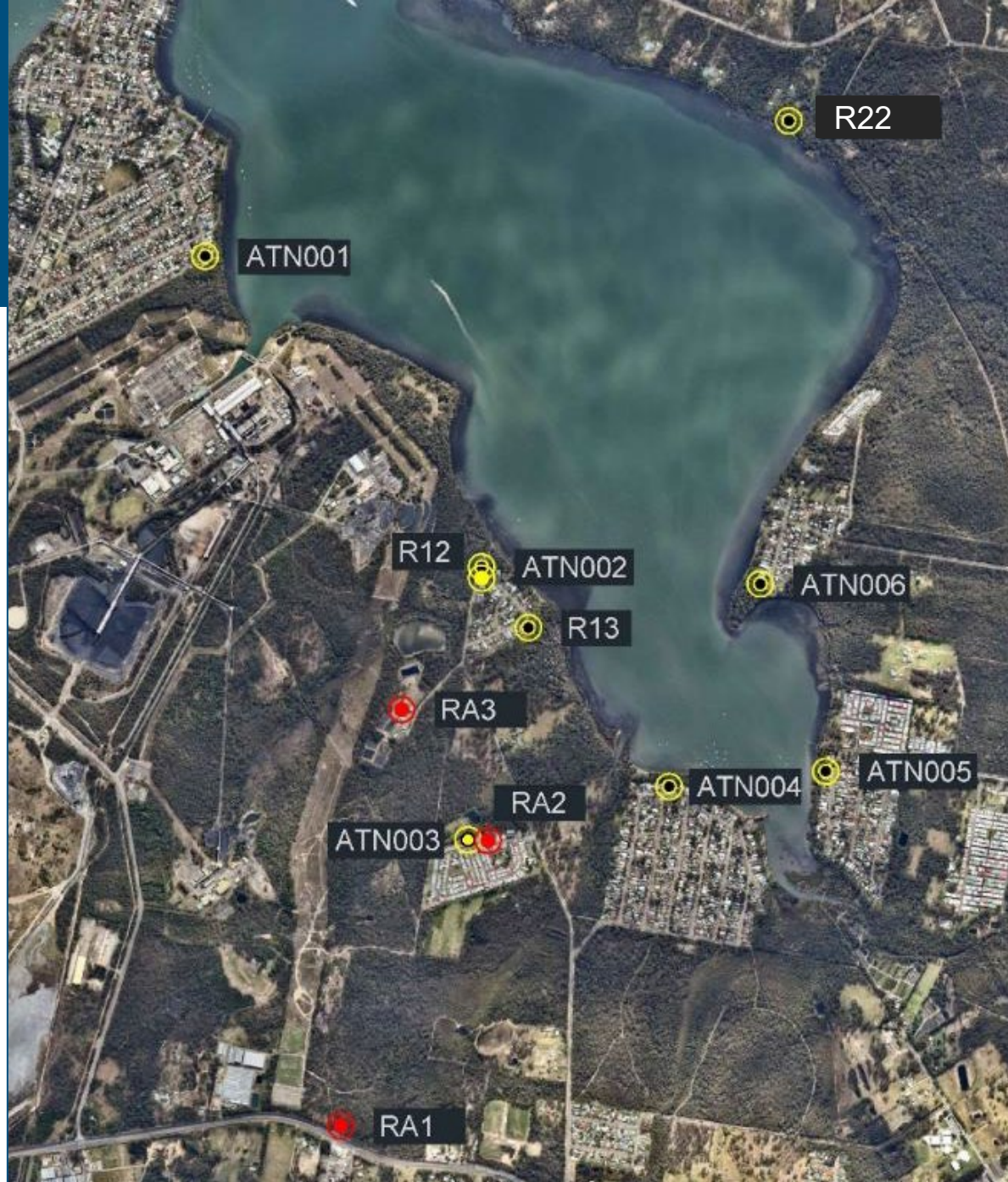


ENVIRONMENTAL PERFORMANCE

Noise Monitoring Locations

Red = MC
Monitoring Location

Yellow = CVC
Monitoring Location



ENVIRONMENTAL PERFORMANCE



Noise Monitoring – CVC

Q2 2025 noise monitoring was undertaken on 3, 5, 12 June 2025.

The highest result for each monitoring location during the monitoring period is presented.

LFN = Low Frequency Noise Penalty.

| Monitoring Point | Site Contributions, dB | | Noise Limit | | Compliance Status |
|-------------------------------|------------------------------|-------|------------------------------|-------|-------------------|
| | LA _{EQ} (15 min) | LAMAX | LA _{EQ} (15 min) | LAMAX | |
| Chain Valley Colliery Q1 2025 | | | | | |
| ATN001 | IA | IA | 38 | 45 | ☑ |
| ATN002 | IA | IA | 49 | 54 | ☑ |
| ATN003 | IA | IA | 36 | 45 | ☑ |
| ATN004 | IA | IA | 35 | 45 | ☑ |
| ATN005 | IA | IA | 35 | 45 | ☑ |
| ATN006 | IA | IA | 37 | 45 | ☑ |
| R22 | 46-47 (41-42 + 5 LFN) | 42 | 46 | 46 | ☑ |
| R12 | IA | IA | 49 | 53 | ☑ |
| R13 | IA | IA | 43 | 49 | ☑ |

ENVIRONMENTAL PERFORMANCE



Noise Monitoring – MC

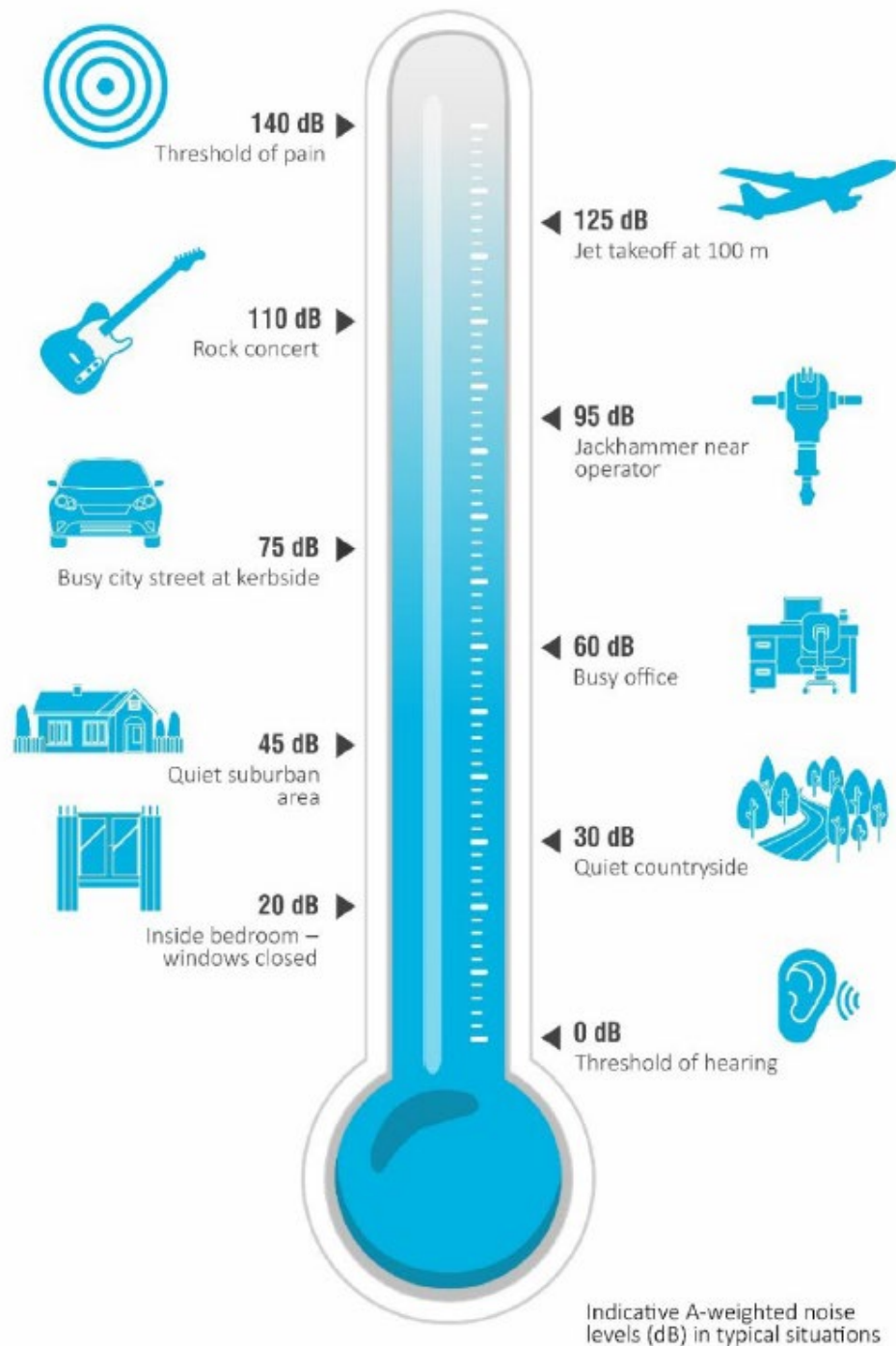
No Exceedances for MC noise monitoring between May and July 2025.

Highest result recorded during monitoring for a location is presented. Monitoring conducted during Evening (6-10pm) and Night period (10pm onward). IA = Inaudible.

| Location | Date | Site Contributions, dB | | Noise Limits, dB | | Compliance status |
|-----------|------------|------------------------|-------|------------------|-------|-------------------|
| | | LAEQ | LAMAX | LAEQ | LAMAX | |
| May 2025 | | | | | | |
| RA1 | 14/05/2025 | IA | IA | 36 | 46 | ☑ |
| RA2 | | 31 | 35 | 40 | 45 | ☑ |
| RA3 | | IA | IA | 39 | 49 | ☑ |
| June 2025 | | | | | | |
| RA1 | 03/06/2025 | IA | IA | 36 | 46 | ☑ |
| RA2 | | 27 | <20 | 40 | 45 | ☑ |
| RA3 | | IA | IA | 39 | 49 | ☑ |
| July 2025 | | | | | | |
| RA1 | 09/07/2025 | <25 | <25 | 36 | 46 | ☑ |
| RA2 | | <25 | <20 | 40 | 45 | ☑ |
| RA3 | | IA | IA | 39 | 49 | ☑ |

ENVIRONMENTAL PERFORMANCE

Noise Monitoring Noise Comparison



Community Complaints between 1 May 2025 and 31 July 2025:

- Chain Valley Colliery - Nil community complaints received in period.
- Mannering Colliery - Nil community complaints received in period.

General Enquiries between 1 May 2025 and 31 July 2025:

- No enquiries received

Questions?